



Spun Sampling Cylinders



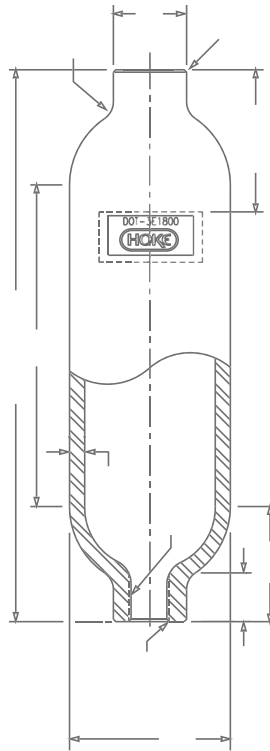
spun sampling cylinders

HOKE Inc.
PO Box 4866 • Spartanburg, SC 29305-4866
Phone (864) 574-7966 Fax (864) 587-5608
www.hoke.com • Sales-hoke@circor.com



Spun Sampling Cylinders

316 Stainless Steel DOT Series



Spun sampling cylinders

Typical Applications

- Sampling hydrocarbons in refineries and petrochemical plants
- Gas sampling for chromatographic analysis
- Snubbers in reactor feed lines
- Surge accumulators in high pressure gas systems
- High vacuum systems as experimental chambers and molecular sieves
- Chemical reaction vessels

Features & Benefits

- Manufactured and tested to DOT 3E or 3A requirements
- Each cylinder is identified with the HOKE logo
- Cylinders are rated to 1800 psi
- Choice of 7 capacities, ranging from 75 cc to 3785 cc (1 gallon)
- Cylinder heads are formed by utilizing spinning process for consistent strength, size and dimensions.
- All interior surfaces are sandblasted for a clean, even surface.
- Neck ring and cap standard on 2250 cc and 3750 cc.
- Thread ends per ANSI B1.20.1
- All cylinders are hydrostatically proof-tested at 3000 psig (206 BAR).
- 150cc, 300cc, 500cc and 1000cc sizes are available as TPED - Approved
- Special High Tolerance NPT Thread

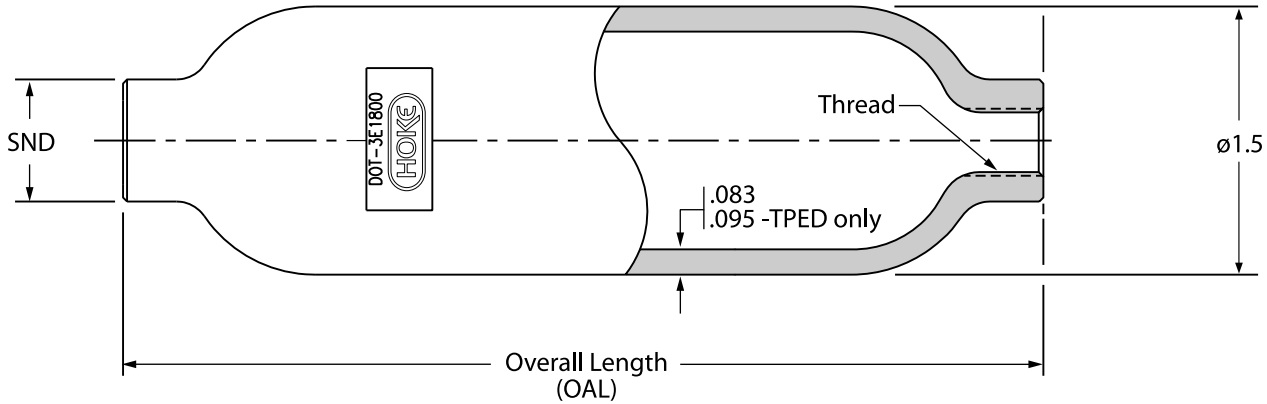
HOKE Inc.

PO Box 4866 • Spartanburg, SC 29305-4866
Phone (864) 574-7966 Fax (864) 587-5608
www.hoke.com • Sales-hoke@circor.com

Spun Sampling Cylinders

Dimensions

HOKE DOT 3E Sample Cylinder, 1.5" (3.81 cm)



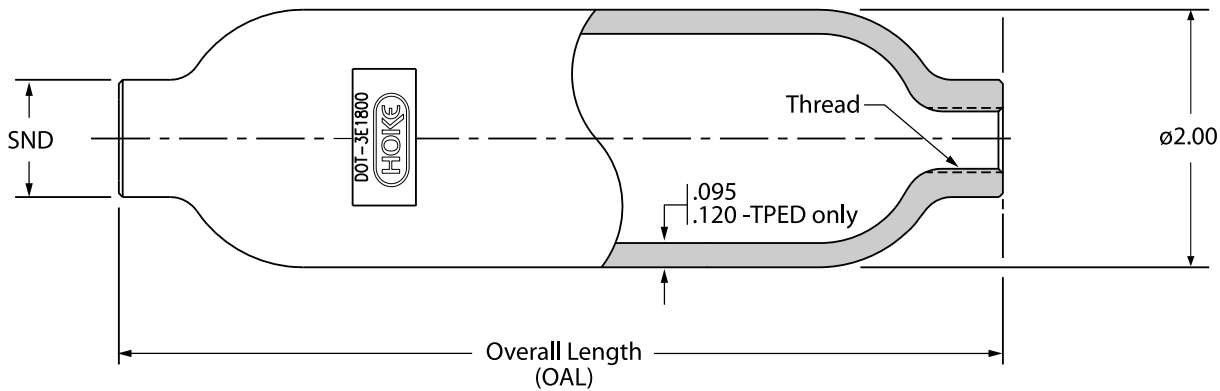
Technical Data

PART NO.	MIN. VOLUME	MAX. WEIGHT	OVERALL LENGTH ±0.10" (±2.5mm)	'SND' ±0.02" (±0.5mm)	THREAD	OPERATING PRESSURE
* HS4HDY75	75 cc (4.6 in. ³)	0.6 lbs. (0.3 kg)	4.88" (12.40 cm)	0.72" (1.83 cm)	¼-18 NPT	1800 psig (124 BAR)
HS4HDY150	150 cc (9.2 in. ³)	1.0 lbs. (0.5 kg)	8.25" (20.96 cm)	0.72" (1.83 cm)	¼-18 NPT	1800 psig (124 BAR)

* Not available as TPED - Approved

Dimensions

HOKE DOT 3E Sample Cylinder, 2.0" (5.08 cm)



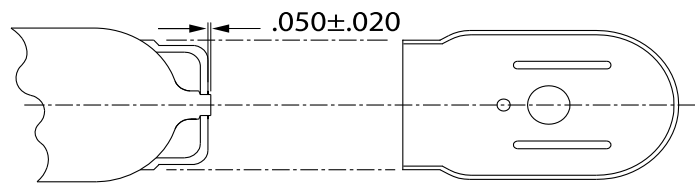
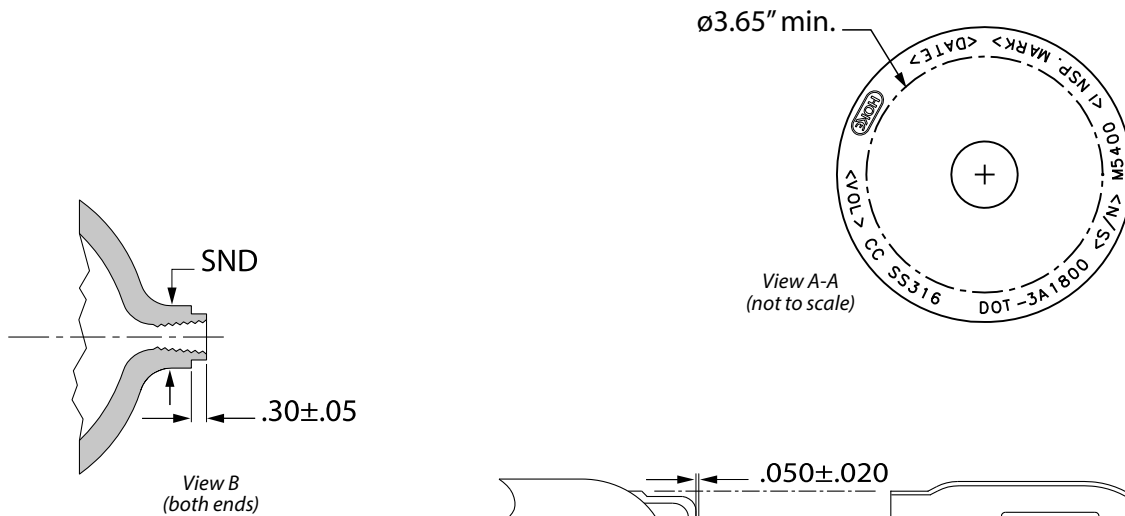
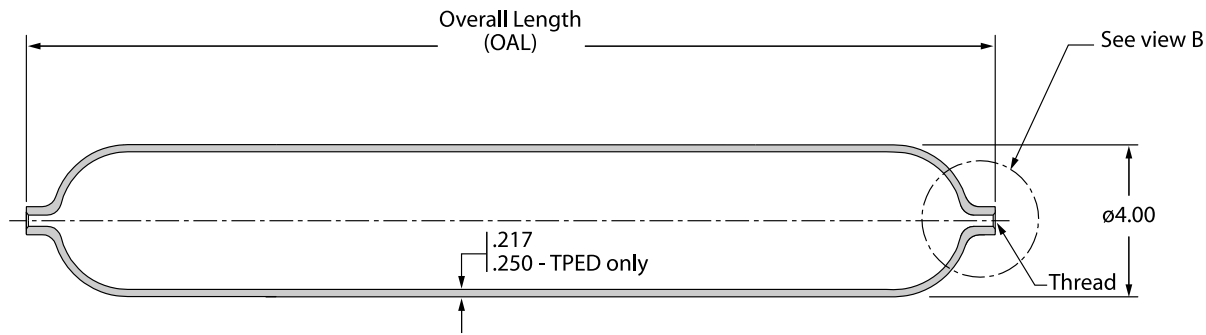
Technical Data

PART NO.	MIN. VOLUME	MAX. WEIGHT	OVERALL LENGTH ±0.10" (±2.5mm)	'SND' ±0.02" (±0.5mm)	THREAD	OPERATING PRESSURE
HS4HDY300	300 cc (18.3 in. ³)	1.8 lbs. (0.8 kg)	9.25" (23.5 cm)	0.74" (1.83 cm)	¼-18 NPT	1800 psig (124 BAR)
HS4HDY500	500 cc (30.5 in. ³)	2.5 lbs. (1.1 kg)	13.88" (35.26 cm)	0.74" (1.83 cm)	¼-18 NPT	1800 psig (124 BAR)

Spun Sampling Cylinders

Dimensions

HOKE DOT 3A Sample Cylinder, 4.0" (10.16 cm)



Technical Data

PART NO.	MIN. VOLUME	MAX. WEIGHT	OVERALL LENGTH ±0.10" (±4mm)	'SND' ±0.02" (±0.5mm)	THREAD	OPERATING PRESSURE
HS4HDY1000	1000 cc (60.1 in. ³)	7.5 lbs. (3.4 kg)	9.5" (24.13 cm)	1.0" (2.54 cm)	¼-18 NPT	1800 psig (124 BAR)
² HS8HDY1000	1000 cc (60.1 in. ³)	7.5 lbs. (3.4 kg)	9.5" (24.13 cm)	1.2" (3.05 cm)	½-14 NPT	1800 psig (124 BAR)
^{1, 2} HS8HDY2250	2250 cc (13.3 in. ³)	12.9 lbs. (5.9 kg)	17.2" (43.69 cm)	1.2" (3.05 cm)	½-14 NPT	1800 psig (124 BAR)
^{1, 2} HS8HDY1G	3785 cc (231.0 in. ³)	20.6 lbs. (9.4 kg)	26.5" (67.31 cm)	1.2" (3.05 cm)	½-14 NPT	1800 psig (124 BAR)

¹ Neck ring and cap assembly are only available for and are standard on the 2250 cc and 3785 cc (1 gal.) cylinders

² Not available as TPED - Approved

For Your Safety

It is solely the responsibility of the system designer and user to select products suitable for their specific application requirements and to ensure proper installation, operation, and maintenance of these products. Material compatibility, product ratings and application details should be considered in the selection. Improper selection or use of products described herein can cause personal injury or property damage.

CIRCOR

INSTRUMENTATION TECHNOLOGIES



CIRCOR Instrumentation Technologies (CIT) is the logical choice for fluid control solutions. We provide the lowest cost of ownership, offering the best in class reliability and availability of our products. We have global coverage, delivering value in the form of local, flexible service to meet our customer's needs. CIT is a product group specializing in instrumentation with orifice sizes typically up to 2".

**PO Box 4866
Spartanburg, SC 29305-4866
Tel +1-864-574-7966
Fax +1-864-587-5608
www.hoke.com
Sales-hoke@circor.com**

**Our headquarters and ISO 9001:2008 certified
manufacturing facilities are located at
405 Centura Court
Spartanburg, SC, USA, 29303-6603**

Proudly Distributed By:

